

### Italian Flanged Ball Valve Features

- Adopting circular arrow mark, the pointer can indicate valve position accurately
- Valve body material is stainless steel
- Easy disassembly and convenient maintenance

### Applications

- Environmental protection, water supply and drainage, water treatment engineering
- HVAC

Certification: CE, ISO9001, MA, AL

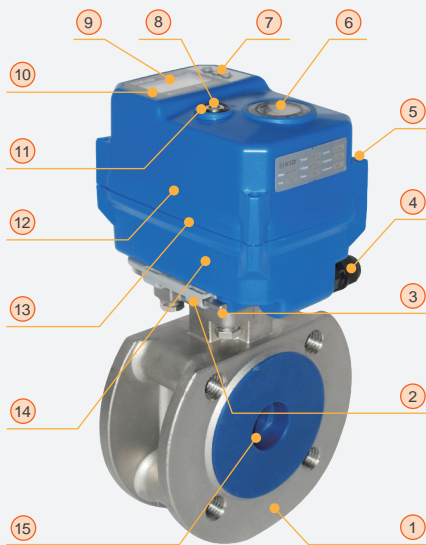


200N normal on/off model



500N normal on/off model

### 200C Smart Italian Flanged Ball Valve Main Components Diagram

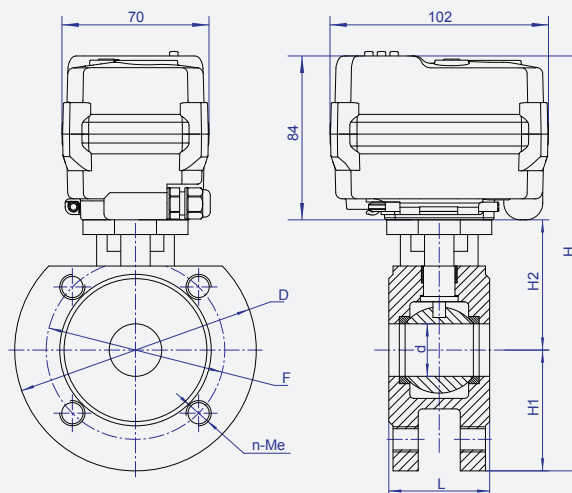


### Main Components

No.	Parts	Materials	Qty
1	Valve body	304 / 316	1
2	Wrench fixed	Heatproof ABS	1
3	Hexagon wrench	Tool steel	1
4	Cable connector	Nylon/Nickel-plated brass	1
5	Screws	304	4
6	Indicator	Transparent AS	1
7	Key	Rubber	3
8	Manual shaft	304	1
9	Screen	OLED	1
10	Label	PVC	1
11	Oil seal	NBR	1
12	Top cover	Heatproof ABS/Casting aluminum	1
13	Lid seal	SI	1
14	Bottom cover	Heatproof ABS/Casting aluminum	1
15	Valve ball	304 / 316	1

Normal on/off model no key and 1.3-inch OLED screen.

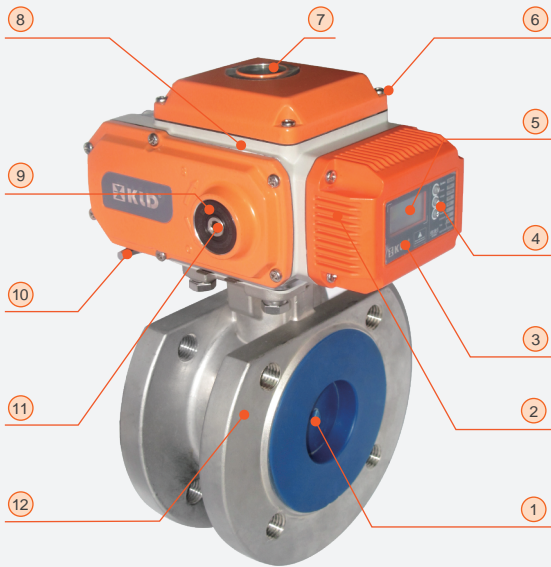
### Dimension 【200C, DN15-DN25】



### Connection Size (unit: mm)

DN	d	L	H1	H2	H	D	F	n-Me	W(Kg)
15	15	42	47.5	48	179.5	95	65	4-M12	
20	20	44	52.5	53	189.5	105	75	4-M12	
25	25	50	57.5	62	203.5	115	85	4-M12	

## 500C Smart Italian Flanged Ball Valve Main Components Diagram

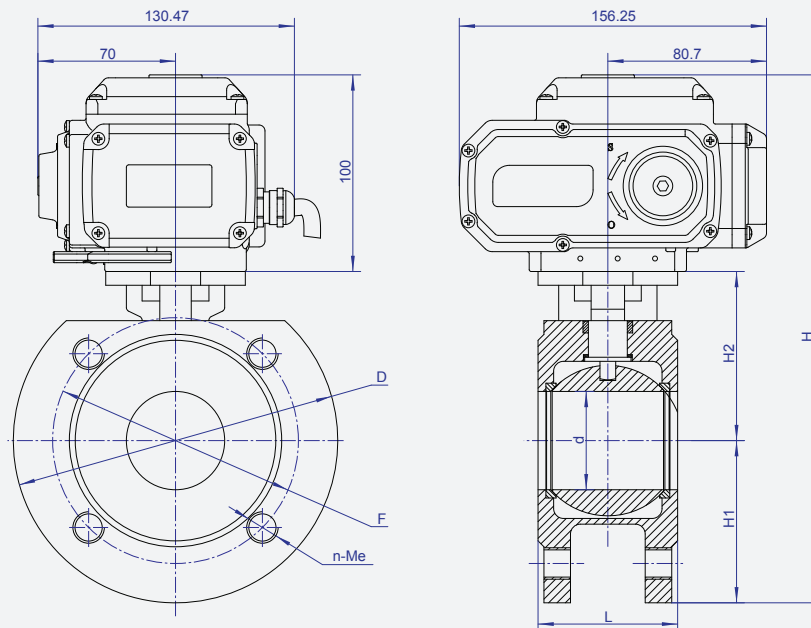


## Main Components

No.	Parts	Material	Qty
1	Valve ball	304 / 316	1
2	Terminal block	Heatproof ABS	1
3	Label	PVC	1
4	Key	Rubber	3
5	Screen	OLED	1
6	Screws	304	17
7	Indicator	Tempered glass	1
8	Actuator	Casting aluminum	1
9	Oil seal	NBR	1
10	Hexagon wrench	Tool steel	1
11	Manual shaft	304	1
12	Valve body	304 / 316	1

Normal on/off model no key and 1.3-inch OLED screen.

## Dimension 【500N, DN32-DN50】



## Connection Size (unit: mm)

DN	d	L	H1	H2	H	D	F	n-Me	W(Kg)
32	32	60	70.0	72	242.0	140	100	4-M16	
40	38	65	75.0	78	253.0	150	110	4-M16	
50	50	80	82.5	86	268.5	165	125	4-M16	

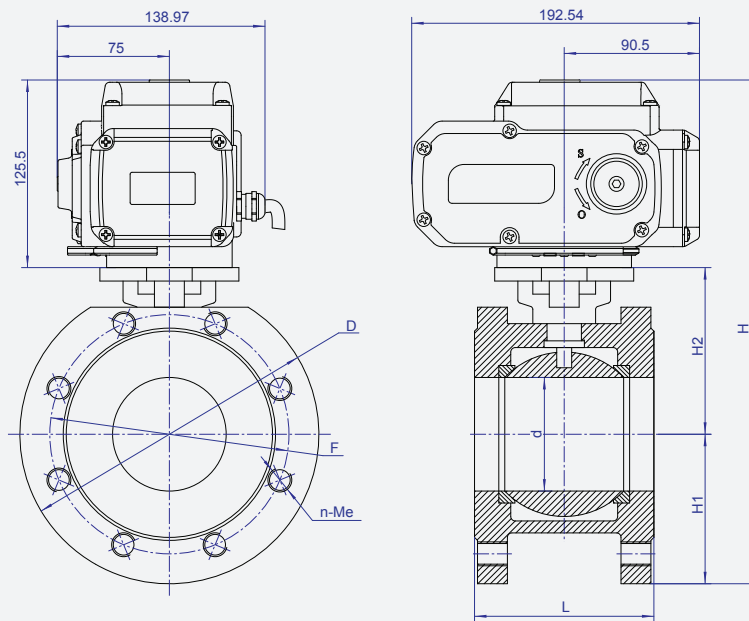
The length of 500C actuator is 173.25 mm.

**1000C Smart Italian Flanged Ball Valve Main Components Diagram**

**Main Components**

No.	Parts	Material	Qty
1	Valve ball	304 / 316	1
2	Termina block	Heatproof ABS	1
3	Label	PVC	1
4	Key	Rubber	3
5	Screen	OLED	1
6	Screws	304	17
7	Indicator	Tempered glass	1
8	Actuator	Casting aluminum	1
9	Oil seal	NBR	1
10	Hexagon wrench	Tool steel	1
11	Manual shaft	304	1
12	Valve body	304 / 316	1

Normal on/off model no key and 1.3-inch OLED screen.

**Dimension 【1000N, DN65-DN100】**

**Connection Size (unit: mm)**

DN	d	L	H1	H2	H	D	F	n-Me	W(Kg)
65	65	110	92.5	103.0	321	185	145	4-M16	
80	76	120	100.0	111.5	337	200	160	8-M16	
100	94	150	110.0	139.5	375	220	180	8-M16	


The length of 1000C actuator is 209.54 mm.

**Electrical Parameters**

Series type	Rated torque @rated voltage	Rated voltage	Available voltage range	Run/static power consumption @rated voltage	Peak cruent @rated volatage @5ms	External fuse specification	Running time <sup>*1</sup> (Per 90°)	Optional control mode
KLD-200N	15N.m	DC24V	DC22V-28V	36W/0.25W	1.5A	3A	10S@Power up 15S@Power down	KT32 or KT32S
		AC110V	AC90V-130V	40W/1.6W	90mA	1A		
		AC230V	AC190-250V	40W/1.6W	90mA	1A		
	20N.m	DC12V	DC10-14V	3.5W/0.3W	1A	2A	10S	B3 BD3 B3S BD3S
		DC24V	DC22V-28V	15W/0.1W	1.2A	2A		
		AC24V	AC18V-26V		0.5A	2A		
AC110V	AC90V-130V	135mA	1A					
KLD-500N	50N.m	DC24V	DC22V-28V	60W/1.5W	2.5A	5A	10S	B3S BD3S
		AC24V	AC22V-28V	50W/1W	3A	5A	20S	
		AC110V	AC90V-130V		1A	2A		
		AC230V	AC190-250V		0.5A	2A		
KLD-1000N	100N.m	DC24V	DC22V-28V	60W/1W	3.5A	5A	10S	B3S BD3S
		AC24V	AC22V-28V	80W/1W	3.5A	5A	30S	
		AC110V	AC90V-130V		1.5A	3A		
		AC230V	AC190-250V		0.6A	2A		
KLD-2000N	200N.m	DC24V	DC22V-28V	180W/1W	4A	10A	10S	B3S BD3S
		AC110V	AC90V-130V	150W/1W	2A	5A	30S	
		AC230V	AC190-250V		1A	5A		
KLD-4000N	400N.m	DC24V	DC22V-28V	240W/1W	5A	10A	10S	B3S BD3S
		AC110V	AC90V-130V	200W/1W	2.5A	5A	30S	
		AC230V	AC190-250V		2A	5A		

※ Since the running time is affected by the valve body, it is considered to be qualified within ± 3s.

**Function parameters**

The valve ball rotation Angel	90°
Protection grade	IP67 or F Type
Manual function	Standard ( Manual override is only permitted to be used when power is cut )
Indicator	

**Working conditions**

Ambient temperature	-20 —60
Ambient humidity	Relative humidity≤85% ---- Suitable for IP67
	Relative humidity > 85% ---- Suitable for IP67
Medium temperature 1	0-100
Medium pressure	≤1.0MPa

It needs to use high-temperature bracket if working medium temperature is between 100 to 120 .